

OSIEDLE KASIEŃKA

A6

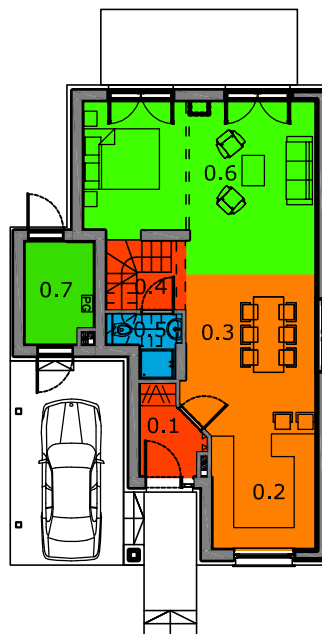
DOM JEDNORODZINNY

POWIERZCHNIA: 107,40M²

DZIAŁKA: 435,54M²

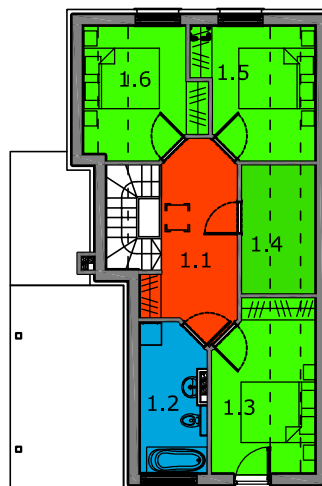
PARTER

0.1 WIATROŁAP	3,45M ²
0.2 KUCHNIA	11,06M ²
0.3 JADALNIA	11,83M ²
0.4 KL. SCHODOWA	3,90M ²
0.5 ŁAZIENKA	2,40M ²
0.6 P. DZIENNY	25,61M ²
0.7 P. GOSP.	4,84M ²
RAZEM:	63,09M ²

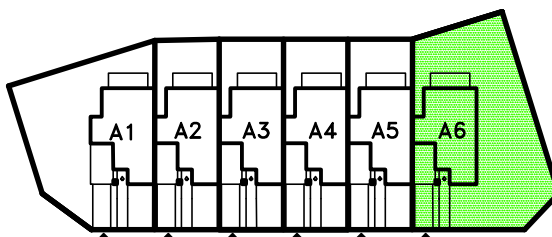
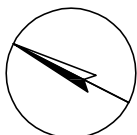


PODDASZE

1.1 HOL	10,30M ²
1.2 ŁAZIENKA	6,72M ²
1.3 POKÓJ	8,33(12,13)M ²
1.4 P. GOSP.	3,95(6,72)M ²
1.5 POKÓJ	7,52(10,45)M ²
1.6 POKÓJ	7,49(10,35)M ²
RAZEM:	44,31(56,67)M ²



SKALA 1:200



SKALA 1:1000

INWESTOR: SOKOŁOWSKI INWESTYCJE SP. J.