

OSIEDLE KASIEŃKA

A2

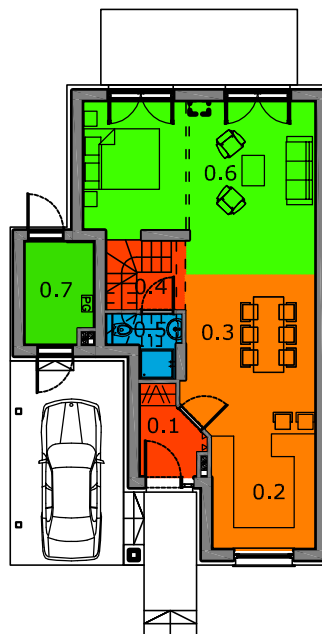
DOM JEDNORODZINNY

POWIERZCHNIA: 107,40M²

DZIAŁKA: 214,51M²

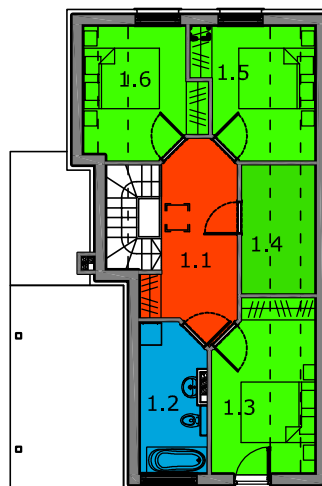
PARTER

| | |
|------------------|---------------------|
| 0.1 WIATROŁAP | 3,45M ² |
| 0.2 KUCHNIA | 11,06M ² |
| 0.3 JADALNIA | 11,83M ² |
| 0.4 KL. SCHODOWA | 3,90M ² |
| 0.5 ŁAZIENKA | 2,40M ² |
| 0.6 P. DZIENNY | 25,61M ² |
| 0.7 P. GOSP. | 4,84M ² |
| RAZEM: | 63,09M ² |

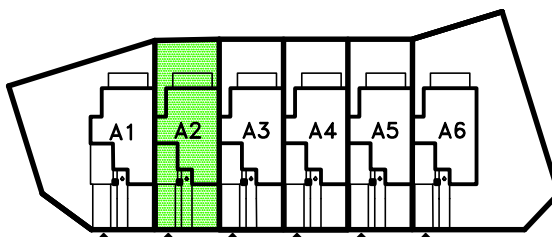
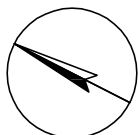


PODDASZE

| | |
|--------------|----------------------------|
| 1.1 HOL | 10,30M ² |
| 1.2 ŁAZIENKA | 6,72M ² |
| 1.3 POKÓJ | 8,33(12,13)M ² |
| 1.4 P. GOSP. | 3,95(6,72)M ² |
| 1.5 POKÓJ | 7,52(10,45)M ² |
| 1.6 POKÓJ | 7,49(10,35)M ² |
| RAZEM: | 44,31(56,67)M ² |



SKALA 1:200



SKALA 1:1000

INWESTOR: SOKOŁOWSKI INWESTYCJE SP. J.